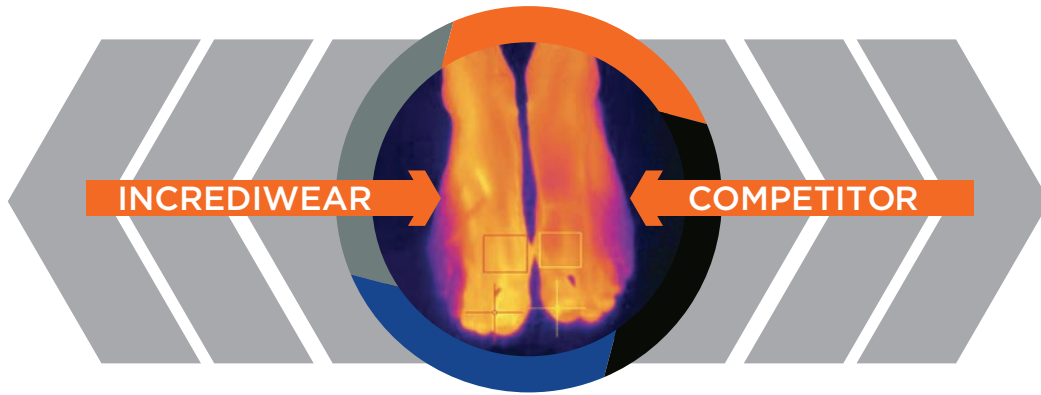


iINCREDIWEAR

LASER DOPPLER & THERMOGRAPHIC STUDIES



Thermographic imaging shows there is a 6.0° F (3.2° C) increase in temperature after just five minutes. 98% of temperature increase is due to increased blood circulation.

CIRCULATION SOCKS

BLOOD FLOW BEFORE TEST: 18.8
 AFTER TESTING FOR 20 MINUTES: 21.2
 DIFFERENCE (%): +12.8%

BLOOD SPEED BEFORE TEST: 18.2
 AFTER TESTING FOR 20 MINUTES: 20.7
 DIFFERENCE (%): +14.3%

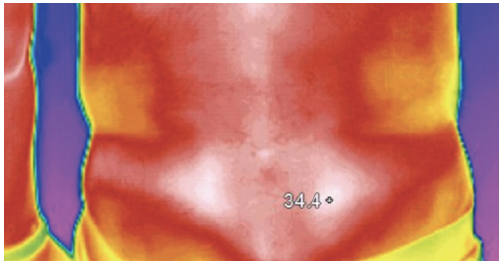
TREK SOCKS

BLOOD FLOW BEFORE TEST: 18.9
 AFTER TESTING FOR 20 MINUTES: 20.9
 DIFFERENCE (%): +14.7%

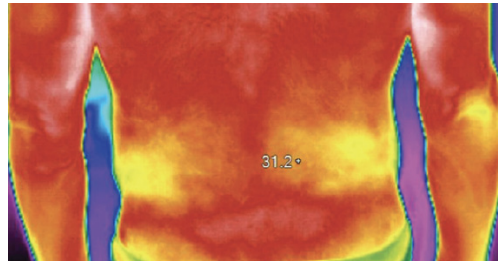
BLOOD FLOW SPEED TEST: 17.9
 AFTER TESTING FOR 20 MINUTES: 19.9
 DIFFERENCE (%): +14.9%

BACK BRACE

Thermographic imaging shows reduced back inflammation just after 22 minutes of use. This is an example of how increasing circulation cools down a targeted area when needed.



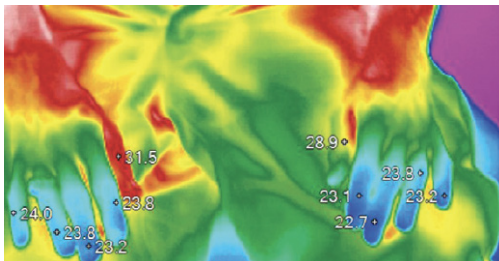
BLOOD FLOW BEFORE TEST: 28.9
 AFTER TESTING FOR 20 MINUTES: 33.3
 DIFFERENCE (%): +15.2%



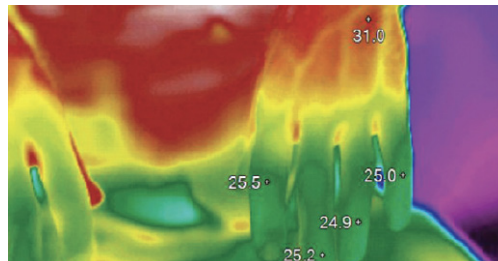
BLOOD SPEED BEFORE TEST: 24.4
 AFTER TESTING FOR 20 MINUTES: 28.5
 DIFFERENCE (%): +16.8%

WRIST SLEEVE & GLOVES

Thermographic imaging shows a decrease in inflammation just after 22 minutes, with increased temperature in the wrist for Carpal Tunnel & Raynaud's Syndrome. Freezing cold fingers to warm fingers in approximately 5 minutes.



BLOOD FLOW BEFORE TEST: 14.6
 AFTER TESTING FOR 20 MINUTES: 16.4
 DIFFERENCE (%): +12.3%

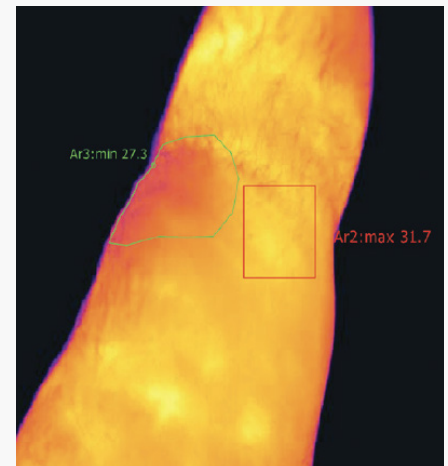
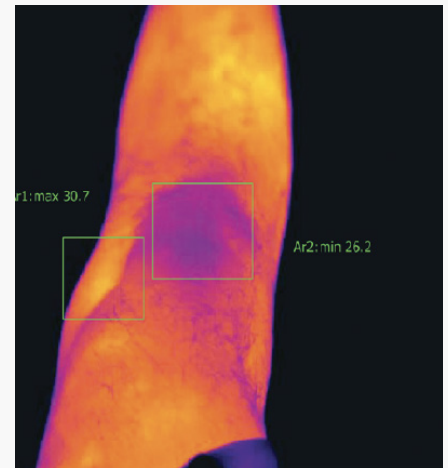


BLOOD SPEED BEFORE TEST: 14.0
 AFTER TESTING FOR 20 MINUTES: 15.9
 DIFFERENCE (%): +13.6%

Laser Doppler blood flow meter tests show the speed of blood in the body during the use of our products and demonstrate the increase in blood flow that occurs.

KNEE SLEEVE

Thermographic imaging shows there is a 6.0° F (3.2° C) increase in temperature after just five minutes. 98% of temperature increase is due to increased blood circulation.



BLOOD FLOW BEFORE TEST: 16.5
 AFTER TESTING FOR 20 MINUTES: 18.5
 DIFFERENCE (%): +12.1%

BLOOD FLOW SPEED TEST: 14.8
 AFTER TESTING FOR 20 MINUTES: 16.7
 DIFFERENCE (%): +12.8%